

20
13

United Way Guelph Wellington Dufferin

ANNUAL REPORT



United Way
Guelph Wellington
Dufferin

change starts here.
www.unitedwayguelph.com



Table of Contents

03	President & Executive Director's Message
05	Board of Directors and Committees
07	Community Investment
11	2013 Community Impact
13	Fundraising Campaign
15	United Way Campaign Awards
16	United Way Corporate Honour Roll
17	United Way Leadership Honour Roll
21	Campaign Sponsors
22	2013 Financial Overview

Our Mission.

United Way Guelph Wellington Dufferin strives to meet existing and emerging social needs in order to improve lives and build community.



President & Executive Director's Report

United Way—making change start here.

2013 was a year of continued success and growth, focused on improving lives and building community.



What a year!

In 2013, our community came together to raise a record \$3.49 million in support of United Way. Once again, this is the largest amount we have ever raised and we are thankful to the more than 7,700 donors, both individual and corporate, that made this possible.

We would like to take this opportunity to thank all of our volunteers who donated their time and energy to run workplace campaigns. Our success is due, in large part, to these dedicated volunteers and their generous community spirit!

We also thank our board of directors and committee members, who ensure that not only are dollars raised, but that they are invested where they can do the most in the community.

The success of the 2013 campaign has made it possible for United Way to invest in 86 social service

programs at 53 local agencies in the City of Guelph and Wellington and Dufferin counties. We want to take a moment to recognize the contributions of the staff and volunteers of the agencies that receive funding from United Way. Their dedication to their users and our community is an inspiration.

In addition to raising funds, in 2013 United Way staff and volunteers continued to support and build capacity in our community.

- We continued to build on our relationship with the labour movement, offering joint training with the Guelph & District Labour Council.
- We worked with a number of community groups to support poverty elimination, strengthen services for children, and share knowledge and expertise.

In 2014, we are looking forward to taking on new challenges and contributing even more to life in our community. This next year will see the beginning of a new strategic plan, making it a time of change and growth. With the addition of our new Campaign Chair, Chief Bryan Larkin, we are looking ahead to new and exciting campaign initiatives planned for 2014 and beyond.

As the largest non-governmental funder of the social and voluntary sector, United Way donors, volunteers and fund recipients work together to improve lives and build community — making change start here!

In closing, we thank all of you for your commitment to United Way. With your support, United Way will continue to fund local programs that move people from poverty to possibility, that create strong communities, and that help kids be all that they can be. Thanks to you, we are making **change start here**.

Khalid M. Khokhar

Khalid Khokhar,
President, Board of Directors

Ken Dardano

Ken Dardano,
Executive Director

Day of Caring



United Way's Day of Caring™ program connects workplaces with charities in need of volunteers for specific projects. In 2013, several companies participated in a Day of Caring, doing such things as delivering meals for the Canadian Red Cross program Meals on Wheels, and cleaning yards for clients with the Alzheimer Society of Dufferin. Those taking part benefited from team building and giving back to their community.



Board of Directors & Committees

Board of Directors

The board of directors generously donate their time and talents to building and strengthening United Way through their leadership, strategic direction and financial oversight.

President: Khalid Khokhar, Islamic School of Cambridge

Vice President: Judy Sorbara, Retired Principal, Upper Grand District School Board

Treasurer: Jean Prichard, BDO Canada LLP

Past President: Steve Allen, Arcelor Mittal Dofasco Inc.

Kelly Henderson, Associated Youth Services of Peel

Stuart Holloway, Metalumen

Margaret Lemoine, City of Guelph

Rick McCombie, The Co-operators

Terry Peach, GE Canada (retired)

Irene Thompson, University of Guelph

Vanessa Young, Intrigue Media

United Way Guelph Wellington Dufferin
Executive Director: Ken Dardano

Campaign Cabinet

The success of the 2013 United Way fundraising campaign was lead by the tireless efforts of our volunteer campaign cabinet. Chaired by Jim Jarrell, cabinet members became our strongest ambassadors, encouraging their peers and their neighbours to invest in their community by giving to United Way.

Campaign Chair

Jim Jarrell, Linamar

Business/Finance Co-Chairs

Sandra Dawe, The Co-operators

Kazi Marouf, Guelph Hydro

Education Division Co-Chairs

Brian Capovilla, Wellington Catholic District School Board

Kim Best, University of Guelph

Stuart McCook, University of Guelph

Labour Division Chair

Enza Commisso, City of Guelph

Leadership Co-Chairs

Irene Thompson, University of Guelph

Mark Kelland, TD Canada Trust

Manufacturing Co-Chairs

Helen Robson, Autocom Manufacturing

Rosanna Sartori, Hastech Manufacturing

Jeff Kritz, McNeil Consumer Healthcare

Chris Riecker, Cargill Canada

Darren Whipp, Cargill Canada

Public Sector Co-Chairs

Jason Bruder, Canadian Food Inspection, Agency – Agriculture Canada

Debbie Bentley-Lauzon, Wyndham House



Campaign Cabinet members Jason Bruder and Helen Robson help out at the Starlight Film Festival.



Campaign Cabinet members, and University of Guelph's United Way Campaign Co-Chairs Kim Best and Stuart McCook.

Fund Distribution Committee

Volunteers on the fund distribution committee ensure donations to United Way are put to their best use. They review the programs applying for United Way funding, ensuring they are offering services in response to the identified community needs.

Committee Chair: Kelly Henderson, Executive Director, Associated Youth Services of Peel, United Way board of directors

Kate Barlow, Markets & Trade Officer, Agri-Food Canada

Jane Blears, Community Member

Paula DeCoito, Executive Director, Social Planning Council of Peel

Vic Folliott, General Manager, The Grand 92.9

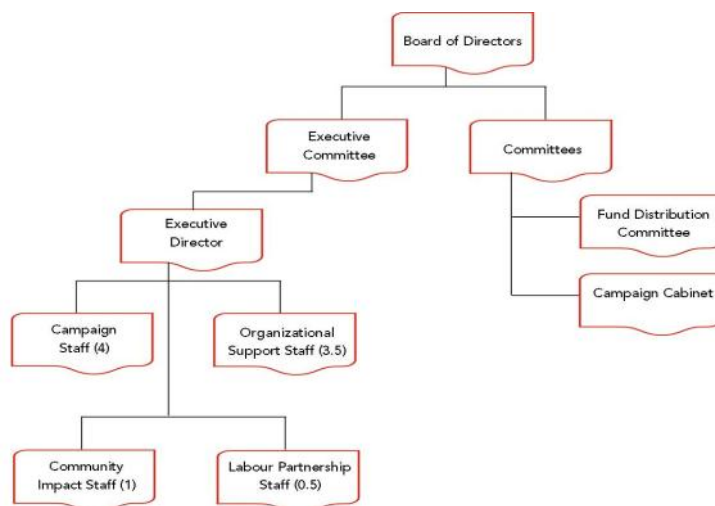
Stuart Holloway, Financial Controller, Metalumen, United Way Board of Directors

Joanne Johnston, County of Dufferin Housing Department

Moustapha Oke, Research Analyst, OMAF & MRA

Susan Robinson McPetrie, Community Member

Organizational Structure United Way Guelph Wellington Dufferin, 2013



Ruth VanLoon, Social Worker, Langs Community Health Centre

United Way Staff Reps: Ken Dardano, Shakiba Shayani

Staff

(as of December 31, 2013)

Ken Dardano, Executive Director

Isabella Barretto, Campaign Manager

Carol Byron, Financial Manager

Brenda Carson, Campaign Manager

Grace Correia, Campaign Director

Dale Mills, Systems and Database Manager (Acting)

Colleen Murdoch, Communications Director

Terry O'Connor, Labour Coordinator

Shakiba Shayani, Community Investment Manager

Jillian Tausky, Systems and Database Manager (parental leave)

Jean Thompson, Administrative Assistant

Patricia Townson, Campaign Manager

Staff moving on during 2013:

Sarah Haanstra

Heather Kepran

Wanzi Muruvi



United Way staff members participating in the University of Guelph's College Idol event, taking place on Halloween.

Community Investment

Funded Programs

In 2013, United Way committed to providing \$2.55 million to 86 programs in the City of Guelph and Dufferin and Wellington counties in 2014-15.

Funds allocated in 2013 are distributed to programs April 1, 2014 to March 31, 2015.

Abbeyfield Guelph Fund

- Our Place Youth Supper Program (\$28,000)

Action Read Community Literacy Centre

- Early Start Family Literacy (\$18,000)
- Educational Supports for Disadvantaged Adults (\$45,140)

ARCH: HIV/AIDS Resources & Community Health

- Support Program for People Living with HIV/AIDS (\$23,857)

Alzheimer Society Waterloo Wellington

- Early and Mid-to-Late Stage Groups (\$7,837)

Autism Ontario—Wellington County Chapter

- Summer Funding Program (\$14,000)

Big Brothers Big Sisters of Dufferin & District

- Core Program (\$25,000)
- In-School Mentoring (\$9,200)

Big Brothers Big Sisters of Guelph

- Group Program (\$24,722)
- In-School Mentoring Program (\$11,400)
- Match Program (\$69,312)
- School-based Group Programs (\$15,000)

Big Brothers Big Sisters of North Wellington

- Go Girls and Game On (\$3,000)
- In-School Mentoring Program (\$4,000)
- Match Program (\$20,680)

Breaststrokes

- Breaststrokes Dragon Boat Team (\$3,850)

Canadian Hearing Society

- Hearing Care Counselling Program (\$7,193)

- Information Services & Community Development (\$8,589)

Canadian Mental Health Association: Waterloo Wellington Dufferin

- Community Development & Education Services (\$28,180)
- Spark of Brilliance (\$27,210)
- Youth Talk (\$24,500)

Canadian National Institute for the Blind (CNIB)

- Children & Youth Services (\$12,875)
- Vision Rehab Services (\$17,997)
- Library Services (\$5,091)
- Volunteer Services (\$10,000)

Canadian Red Cross Society – Guelph/Wellington Branch

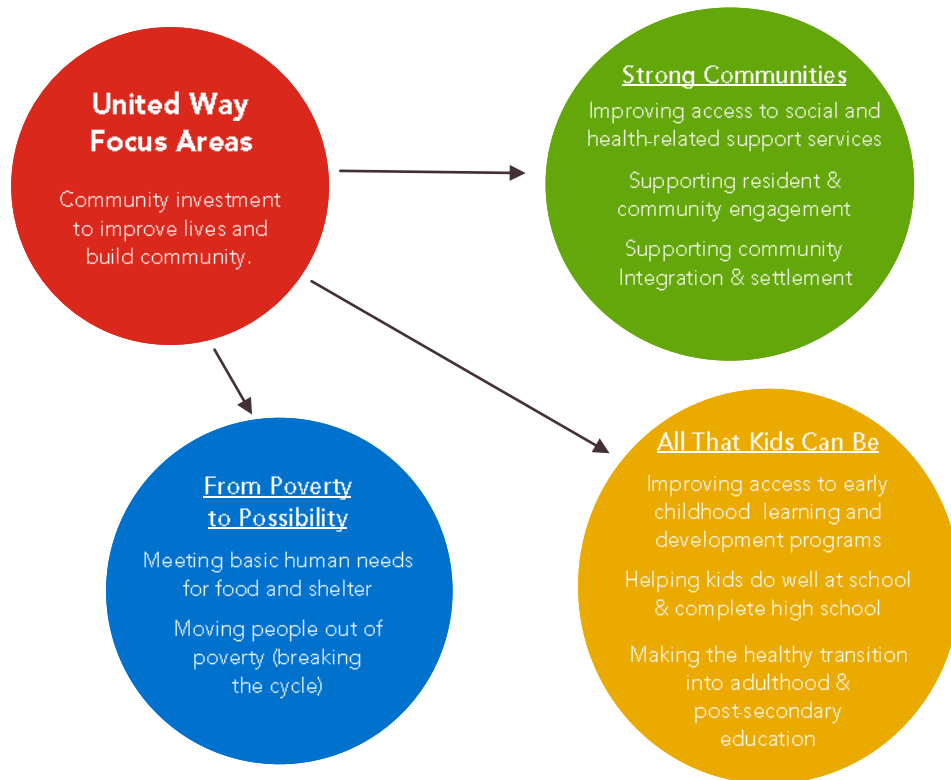
- Disaster Management Services (\$7,500)
- Healthcare Equipment Loan Program (\$12,000)
- Meals on Wheels (\$12,000)
- RespectED (\$8,000)



Members of United Way's funded agencies for 2014-2015.

United Way Focus Areas

United Way invests funds in community programs based on identified community needs. Local volunteers manage the distribution of funds, thoroughly researching & meeting with agencies applying to United Way to learn first-hand how their programs address local issues. This process ensures that your donated dollars go where they are needed most. Funds are allocated to programs in the priority areas outlined below.



Centre Wellington Food Bank

- Healthy Fresh Food (\$10,500)

Chalmers Community Services Centre

- Food Pantry (\$23,220)

Children's Foundation of Guelph and Wellington

- Food & Friends (\$45,000)

Child Witness Centre

- Child Witness Program (\$6,000)

Community, Engagement & Global Citizenship, Student Life

- Project Serve (\$4,500)

Community Resource Centre of North & Centre Wellington

- Outreach and Support Services (\$103,809)

Community Torchlight/Distress Centre Wellington/Dufferin

- Distress Line Listening Service (\$85,000)

Dufferin Child and Family Services

- LGBT Youth Group (\$6,600)

Dufferin Parent Support Network

- Group Parent Education (\$16,200)

East Wellington Community Services

- Client Services (\$45,727)
- Food Bank (\$22,500)
- Community Outreach (\$35,000)

Family & Children's Services of Guelph Wellington

- Early Intervention Program (\$50,000)

Family Counselling & Support Services

- Credit and Debt Counselling (\$65,000)
- Professional Counselling (\$101,642)

Give Yourself Credit

- Give Yourself Credit (\$29,120)

Guelph & District Labour Council

- Labour Counselling Program (\$25,013)

Guelph & District Multicultural Festival

- Community Engagement (\$7,500)

- One World Living Together Project (\$7,500)

Guelph & Wellington Task Force for Poverty Elimination

- PTF Program (\$20,000)

Guelph Enabling Garden

- Volunteer Co-ordinator Position (\$13,000)

Guelph Independent Living

- Recreation & Inclusion Program (\$10,735)

Guelph Neighbourhood Support Coalition

- Group Capacity Building & Coordination (\$50,000)

Guelph/Wellington Seniors Association

- GWSA Community Support Services (\$135,600)

Guelph-Wellington Women in Crisis

- Rural Women's Shelter Support Program (\$45,000)
- Sexual Assault Centre (\$27,223)

Headwaters Communities in Action

- Community Wellbeing Education & Engagement (\$20,000)
- Mobilizing Collective Action (\$20,000)

Hospice Wellington

- Bereaved by Suicide (\$5,580)
- Grief & Bereavement (\$48,350)
- Wellness Program (\$9,500)

Immigrant Services Guelph-Wellington

- Mobilized, Engaged, Involved (\$37,930)

John Howard Society of Waterloo-Wellington

- Anti-bullying (Crime Prevention) Workshops (\$6,000)
- Communicating Our Perspectives & Emotions (COPEs) (\$7,500)
- Community Aftercare (\$15,008)

March of Dimes

- Assistive Devices Program (\$16,891)

Michael House Pregnancy Care Centre

- Residential Program (\$50,000)

Mood Disorders Support Group of Guelph

- Mood Disorders Support Group (\$6,956)

Onward Willow—Better Beginnings, Better Futures

- Building Our Community One Youth at a Time (\$47,500)

Rainbow Programmes for Children

- Inclusive Summer Day Camp (\$14,000)

St. John Ambulance – Fergus/Elora Branch

- First Aid & Community Services (\$5,006)

St. John Ambulance – Guelph Branch

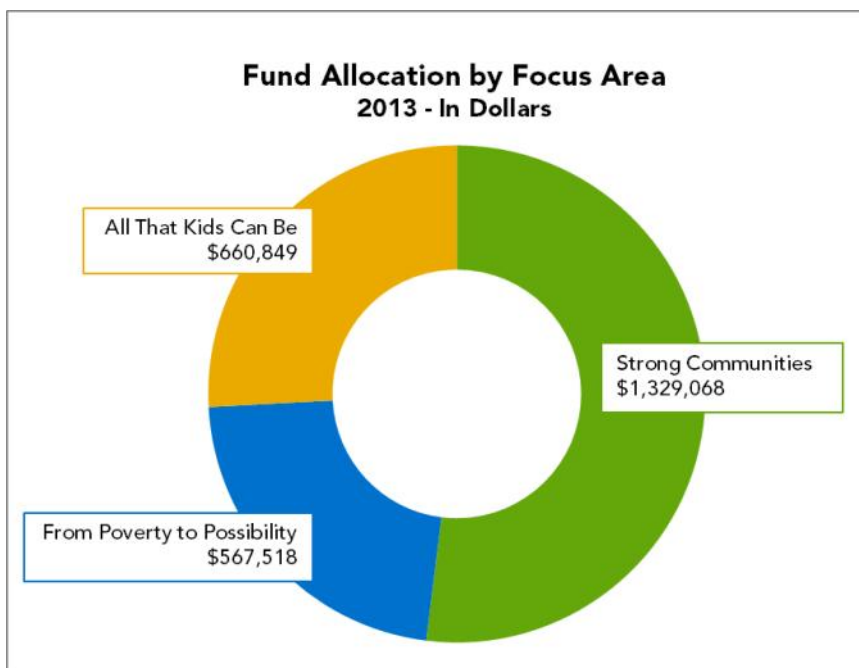
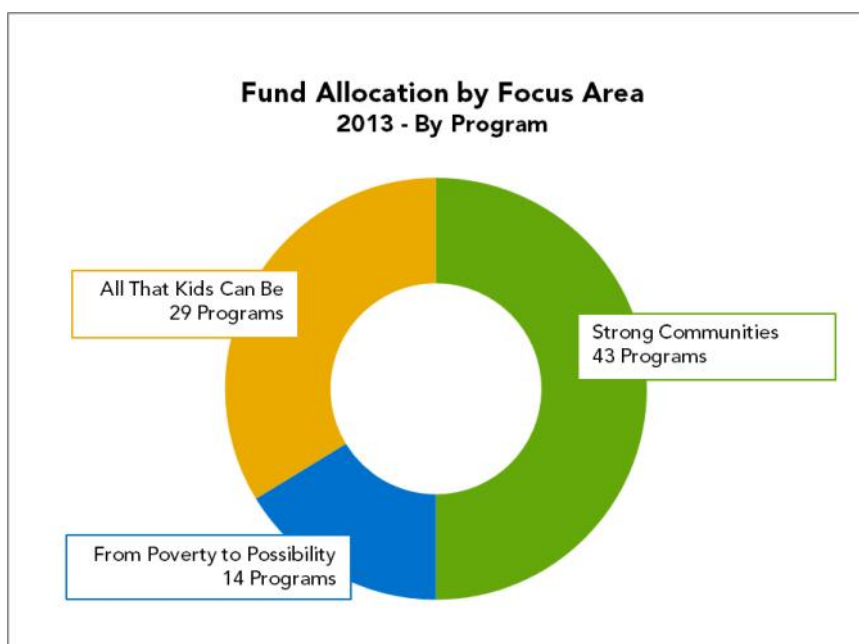
- First Aid Program (\$5,000)
- Therapy Dog Program (\$1,000)

United Way Guelph Wellington Dufferin

- Community Impact (\$198,000)
- Student Volunteer Recognition Scholarships (\$3,640)

Victorian Order of Nurses

- Transportation Benevolent Program (\$9,600)
- Volunteer Visiting (\$15,673)



Volunteer Centre of Guelph/Wellington

- Community Information Guelph (\$89,163)
- Volunteer Services (\$75,000)

Volunteer Dufferin

- Volunteer Dufferin (\$3,000)

Welcome In Drop-In Centre

- Drop-In Centre (\$60,000)
- Last Month's Rent Fund (\$23,985)
- Stepping Stone Emergency Shelter (\$5,865)

Wellington County Learning Centre

- Just for YOUTH Literacy (\$25,000)

Wyndham House Inc.

- Youth Resource Centre (\$101,000)
- Long-term Residential Program (\$99,666)

YMCA/YWCA of Guelph

- Teenage Parents Program (TAPPS) (\$36,100)

Funded Agencies



Food & Friends Breakfast Program



Immigrant Services Guelph Wellington



CMHA—Youth Talk Program



Guelph Wellington Seniors Association

Everyday, programs and services funded by United Way Guelph Wellington Dufferin help our families, our friends, our neighbours. These programs are for everyone in our community, from infants to seniors; from Aberfoyle to Mount Forest to Shelburne. They are programs many of us hope we'll never need to call on, but are thankful for when the need arises. Thanks to our generous donors, United Way Guelph Wellington Dufferin is funding 86 programs at 53 local agencies for 2014-2015.

Community Investment

2013 Community Impact

Monitoring the Overall Health of Our Community

The community impact mission is to improve lives and build community by engaging individuals and mobilizing collective action. Community Impact is about achieving meaningful, long-term improvements to the quality of life in Guelph, Wellington and Dufferin communities, by addressing not just the symptoms of problems, but also getting at the root causes.

Highlight from the activities of the United Way's Community Investment Team in 2013 include:

- The creation of a Community Impact Council to guide United Way funding investments ensuring the achievement of the community priorities.
- Administering the Homeless Partnering Strategy and Winter Warmth funding for Guelph and Wellington County.
- Partnering with City of Guelph and Guelph Community Foundation to award participants in the *Senior Leadership & Management in the Not-For-Profit Sector* certificate program at Conestoga College with tuition scholarships.
- Convening or contributing to collaborative initiatives, including:
 - Guelph & Wellington Task Force for Poverty Elimination
 - Wellington Guelph Housing Committee
 - Wellington-Dufferin-Guelph Coalition for Report Cards on the Well-Being of Children
 - Community Data Program—Wellington-Dufferin-Guelph Consortium
 - Guelph-Wellington Local Immigration Partnership

In addition, our community investment staff work closely with local community groups—those that receive United Way funds and those that do not—to address the social service issues identified through research activities.

Community Investment research informs United Way's investment in social and health-related services, ensuring donations go to programs that address pressing community needs.



Labour Partnership



Since 1988, United Way Centraide Canada and the Canadian Labour Congress have been working together to strengthen communities. Union members and their families are United Way donors and volunteers, as well as users of the programs and services United Way funds. Locally, United Way Guelph Wellington Dufferin is proud of our partnership with the Guelph & District Labour Council. Through workplace campaigns and local events, including the University of Guelph Union BBQ (pictured above), Labour brings us one step closer to making change start here.

CUPE

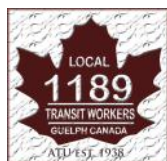
ETFO/FEEO
Elementary Teachers' Federation of Ontario
Fédération des enseignantes et des enseignants
de l'élémentaire de l'Ontario

FSEA
The Food Service Employees Association

UNITED STEELWORKERS
USW
UNITY AND STRENGTH FOR WORKERS

PSAC AFPC
Public Service Alliance of Canada
Alliance de la Fonction publique du Canada

OSSTF/FEESO
ONTARIO SECONDARY SCHOOL
TEACHERS' FEDERATION



UNIFOR
theUnion | lesyndicat

CSA Your Student Union At Guelph

Fundraising Campaign

2013 Campaign Highlights

With United Way thousands of community members come together, contributing their talents and money, and raising funds in support of vital social services.



Over the past 20 years, the annual United Way campaign has raised more than \$45.8 million to support social service and voluntary-sector programs in Guelph, Wellington and Dufferin. With more than 1,100 volunteers taking part in the campaign annually, this is truly a community achievement.

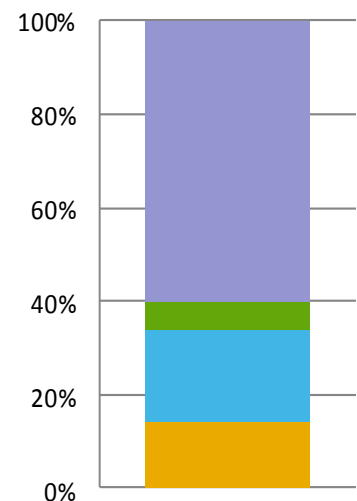
Under the leadership of Campaign Chair Jim Jarrell and the campaign cabinet, the 12 week campaign in the fall of 2013 saw 250 workplaces run campaigns. Volunteers in each workplace collected pledge forms, ran special events and shared the message of the positive changes United Way makes possible in the community. Union locals in workplaces across Guelph, Wellington and Dufferin contributed to the strength of several campaigns. Still others in the community gave through mail or online options.

Campaign by the Numbers

- \$3,493,547—total raised, of which \$3.45 million was through donations
- 7,736 donors
- \$441 average gift
- 512 Leadership Donors, giving over \$1,000 per year
- 725 Everyday Heroes, giving \$1 a day
- \$689,475 in corporate donations

Community Giving 2013

- Employee Giving
- Individuals
- Corporate Giving
- Special Events



United Way Fun!



United Way Workplace Campaigns are an excellent way to engage employees and enhance a corporate image, while demonstrating community spirit. Many of our workplaces choose to run special events or bring in speakers from our funded agencies to speak to employees about the value of their donation. From flipping pancakes and holding raffles to shaving heads and sitting in dunk tanks, we are always amazed at the fun and creative ways our volunteers engage others in their United Way campaigns.



United Way Campaign Awards 2013

Congratulations to the recipients of the 2013 Campaign Awards, and to all the workplaces that contributed to their community through United Way.

President's Award

Linamar Corporation
University of Guelph

Campaign of the Year Award

Cargill Canada

Leadership Giving Award

Cargill Canada

Union-Management Workplace Campaign Award

Guelph General Hospital

Employee Campaign Coordinator of the Year

Cargill Canada Team—Tim Mathieson, Melinda Sabo, Christina Reddin, Tara Ross

Union Campaign Coordinator of the Year

Tina Swindells, University of Guelph

Spirit Awards

Education Spirit Awards

St. Peter's Elementary School, Guelph
Department of Human Resources,
University of Guelph

Manufacturing Spirit Awards

SIHI Pumps Limited
Roctel Manufacturing



Members of Cargill Canada's team ran an outstanding United Way campaign in 2013, raising a record \$455,561.

Sleeman Breweries Ltd.

Public Sector Spirit Awards

Agricorp
LCBO
Canadian Mental Health Association
Waterloo Wellington Dufferin

Business & Finance Spirit Awards

Guelph Hydro
Millennium 1 Solutions
RBC Royal Bank

Agency Speaker of the Year Award

Edgar Riel & Joanne Morant, Action Read

First Time Campaigns

RLB LLP

Pacesetting Campaigns

Cargill Canada
CJOY/Magic FM
The Co-operators
Farm Credit Canada

Future Shop

GE Water & Process Technologies

Guelph Hydro employees

Guelph Mercury

Guelph Twines

InBox Marketer

Linamar's Camcor, Hastech, Linex, LPP
and Roctel facilities

McNeil Consumer Healthcare

RBC Foundation

Sleeman Breweries Ltd.

TD Canada Trust

United Way Guelph Wellington Dufferin
employees

Participation Awards

Platinum Award Winners

AIDS Committee of Guelph &
Wellington

BMO Bank of Montreal (multiple
branches)

Canadian Hearing Society Guelph

Second Chance Employment Counselling

St. John Ambulance Guelph Branch

TransAlta
 United Way Guelph Wellington Dufferin
 employees
 Volunteer Centre of Guelph/Wellington

Gold Award Winners

Family Counselling & Support Services
 Guelph Hydro employees
 RBC Royal Bank (multiple branches)
 RLB LLP
 Service Canada

Silver Award Winners

Action Read Community Literacy Centre
 Bayer Crop Science
 Big Brothers Big Sisters of Guelph
 Community Torchlight/Distress Centre
 Wellington/Dufferin
 Guelph Wellington Women In Crisis
 Immigrant Services Guelph Wellington
 Inbox Marketer

Public Health Agency of Canada (multiple
 locations)
 SIHI Pumps Limited
 Syngenta Crop Protection Canada Inc.
 TD Canada Trust
 The Co-operators
 Wellington County employees

Bronze Award Winner

Cargill Canada
 CIBC (multiple locations)
 City of Guelph
 EastGen
 Farm Credit Canada
 Gamsby & Mannerow Ltd.
 Guelph Chamber of Commerce
 John Howard Society of Waterloo
 Wellington
 Ministry of Community Social Services
 OLG Slots at Grand River Raceway
 Ontario March of Dimes Canada
 PolyOne

Sun Life Assurance Company Canada
 Transgear Manufacturing Inc.
 Triumph Tool



Ractel Manufacturing ECC's Sara Mammoliti and Haley Vanhie accept the Manufacturing Division Spirit Award.

United Way Corporate Honour Roll

These organizations donated
 \$5,000 or more to United Way
 in 2012 through corporate,
 employee, union member, and
 retiree donations. Thanks to
 everyone for their generosity!

\$500,000 and above

University of Guelph community
 Linamar Corporation

\$200,000 to \$499,999

Cargill Canada
 The Co-operators

\$100,000 to \$199,999

Sleeman Breweries Ltd.
 The Co-operators

\$50,000 to \$99,999

City of Guelph employees
 Guelph Hydro employees
 LCBO
 McNeil Consumer Healthcare
 One Stone Road Provincial employees
 Wellington Catholic District School Board
 Wellington County employees

\$25,000 to \$49,999

Agricorp
 Blount Canada Ltd.
 Government of Canada Workplace
 Charitable Campaign
 Homewood Health Centre
 RBC Royal Bank
 TD Canada Trust

\$10,000 to \$24,999

Bank of Montreal
 Bayer Crop Science
 Cascade (Canada) Ltd
 CIBC
 Denso Manufacturing Canada Inc.
 EastGen
 Future Shop/Best Buy
 Galaxy Cinemas Guelph (Starlight Film
 Festival event)
 GE Water and Process Technologies
 Guelph General Hospital
 Inbox Marketer
 Meridian Credit Union
 OLG Slots at Grand River Raceway
 Owens Corning Canada
 Rowan Williams Davies & Irwin (RWDI)
 Scotiabank
 SIHI Pumps Limited

\$5,000 to \$9,999

Armtec Limited

BDO Canada LLP

Canadian Mental Health Association
Waterloo Wellington Dufferin

Conestoga College

Family & Children's Services of Guelph
and Wellington

Hitachi Construction Truck
Manufacturing Ltd.

Millennium 1 Solutions

Public Health Agency of Canada

RLB LLP

SmithValeriotte Law Firm LLP

Sun Life Assurance Company of Canada

Tacoma Engineers Inc.

Township of Centre Wellington

Triumph Tool Ltd.

United Way Guelph Wellington Dufferin
employees

Upper Grand District School Board



Guelph Hydro was awarded a United Way Spirit Award in the Business & Finance Division.

Leadership Honour Roll

United Way Leadership donors are recognized for annual gifts of over \$1,000. We thank the individuals below for their generosity and their contribution to improving lives and building community.

Champions (\$10,000+)

Jim & Sandra Jarrell

Clark McDaniel

John & Pamela Rennie

1 *Anonymous*

Gordon Boughner

Kerry Daly

John D. Goddard

Marsha Groves

Beverley Hale & Lloyd Cummins

Vicki Hodgkinson

Ric & Betty Jordan

J.I. MacInnes

Ryan MacInnis

Rick & Joanne McCombie

Stuart McCook

Gregg Mitchell

Lucia Mitukiewicz

Geoff Newton

Bol Niwar

Helen Oliver

Debra Sikora

Hugh A. Smith

R.M.W. Stevenson

Harold & Brenda Whiteside

9 *Anonymous*

Builders (\$1,500 - \$2,499)

Bill & Jo Barr

Frank Bomben

Andrea Bradford

Alfred Brandenburg

Pathfinders (\$5,000-\$9,999)

Steve & Marnie Allen

Ian K. Barker

Sid Brodovsky & Cary Shafir

Brenda Coomber & Jamie Ford

Maureen Mancuso & Kevin Porter

Sandra Rechico

6 *Anonymous*

Patrons (\$2,500 - \$4,999)

Katherine Bardswick

John Bligh

Prof. Nancy Bligh

Doug Bouck



Canadian Mental Health Association Waterloo Wellington Dufferin and Agricorn were awarded 2013 United Way Spirit Awards in the Public Sector.



City of Guelph Mayor Karen Farbridge and ECC Dawn Hamilton present United Way Guelph Wellington Dufferin Executive Director, Ken Dardano, with a cheque on behalf of the City's employees.

Robert Brown
 Dr. Donald Bruce
 Jason Bruder
 Dr. Edward Burnside
 Alasdair & Michelle Campbell
 Dr. Julia Christensen Hughes
 Dr. Anthony Clarke
 Charles Cunningham & Anne Stuart
 Ken Dardano
 Don Drone
 Michael & Dawn Emes
 Colin & Lori Ferguson
 Craig Ferneyhough
 Denise & Martin Fielding
 Stephen Garrod
 Christian Giroux & Anna Cox
 George & Jantje Harauz
 Rosemary Hayhurst-France
 Mark & Denise Kelland
 Geoff & Grace Kirk
 Jim & Kelly Kirkland
 Bill & Colleen Koornstra
 Janet Laird
 Aleksandar Lazarevic
 Lloyd Longfield
 Frank Lowery
 Carl & Jennifer Mackie
 Grant & Laura Maxie
 Patricia J. McCraw
 John & Bonnie Melichercik
 Baozhong Meng & Sunny Li

Paul & Kate Mlodzik
 The Kitchener and Waterloo Community Foundation
 Gard Otis & Lisbeth Sider
 Ann Pappert & Al Bogusky
 Ella & Peter Pauls
 Kathy Phillips
 Christina Reddin
 James Reddin
 Janice Reiner
 Gloria Reynen
 Grant Robinson
 Jaqueline Rodden
 Ross Rowat
 Mike Sabourin
 D. Stark & H. Dobson
 Mr. Martin Stocker
 Elizabeth Arnold Stone
 Al Sullivan
 Jeff Thomason & Melody Wren
 Janice Tigert-Walters
 Jon Warland
 Dan & Caren Watchorn
 Bruce & Karen West
 Glenn & Marilyn White
 Chris & Dorothea Whitfield
 Jane Wielhorski & Chris Corosky
 Daniel Woods
14 Anonymous

Leaders (\$1,000 - \$1,499)

Dave Aberle
 Christopher Adamson
 Tammy Adkin
 Drohan Amos
 Valerie Anderson
 Don & Debbie Armstrong
 Linda Artuso-Jacobi
 Lynda M. Ashbourne
 Stephen Bard
 Tracy Barker
 Brian Beckenhauer
 Robin Begin
 Carmel Bellamy
 Brenda & Michael Ben
 Alan Boivin
 Rick Bolzon
 Luc Bourgeois
 Rob Bowler
 Dave Brancati
 Lisa Bratina
 Jodi Brendsme
 Frank O. Brewster
 H. Paul Brophy
 Dave Brown
 Dr. James Brown
 Kathleen Brown
 Susan Brown
 Mark Burton
 B L Cadogan
 Charles Bram Cadsby
 Wayne Caldwell
 Ken Cameron
 Douglas Campbell
 Brian Capovilla
 Andrew Carlyle
 Christopher Carpino
 Catherine Carstairs
 John Carter
 Kim Chafee
 Phil Chapman
 Chris Chase
 Edwin Chestnut
 Kurt Christie
 Barry Chuddy
 Kwon Chung

Joe Cincinnato
 Greg Clark
 Jason Clark
 Edward Clayson
 Jaclyn Cockburn
 Mac Cole
 Lorraine Collingwood
 Ron Collins
 Tanis Comrie
 Dr. Peter Conlon
 Grace Correia
 Annie Cote-Kennedy
 Jonathan Crawshaw
 Teresa Crease
 Barry Cullen
 Harry & Lynda Cummings
 Peggy Curry
 Roy Danzmann
 Philimon Daud
 Jennifer Davies
 Sandra Dawe
 Terry & Dorothy Daynard
 Brian de Alwis
 Steven De Brabandere
 Danny DeFidelibus
 Bryan Dennis
 B DeRoo
 Dennis Deters

Steve & Krista Devine
 Trevor & Lucille Dickinson
 Timothy Diebel
 Kyle Dietrich
 Hoan Do
 Derek Doherty
 Ted Duchesne
 Todd Duffield
 Doug Eberlee
 Chuck & Lisa Ellis
 Richard Ernst
 Mary Evans
 Elizabeth Ewan
 Karen Farbridge
 Andy Ferguson
 Moira Ferguson
 Denise Fielding
 Alan Filewod
 Charlene Fish
 Danny Fish
 Terry Fisher
 Rick Ford
 Mary & Keith Fowler
 Deborah France
 Robert Fraser
 Domenic Furlano
 Rob Furlong
 Alan Gale

Genevieve Gauthier
 Matthew & Beth Gibney
 Stephen Gismondi
 Nicole Glazier
 Darryl Goodwin
 Dr. Robert Gordon
 Philip Gosling
 Terry & Pam Graham
 Donald Grant
 Gayleen Gray
 Dr. & Mrs. Kenneth Gregory
 Paul Groh
 Diane Gumbs
 Thom Hagerty
 Stacey Hare
 Trevor Hart
 Joanne Hasson
 Anita Hayes
 Liz & Murray Hazlett
 Dr. Sally Hickson
 Ellis Hiscock
 Charlotte Hodgson
 Kathryn Hofer
 Stuart Holloway
 Al Horsman
 Csaba Horvath
 Renee House
 Kim Howard
 Anastasia & Ruud de Reijke
 Sally Humphries
 Carol Hunter
 David Hurlburt
 Craig Hyatt
 Kim Iezzi
 Ward Illsley
 Dr. Kris Inwood
 Margot Irvine & John Koch
 Rick & Bonnie Irving
 Pamela Jacobs
 Tracey Jandrisits
 Hollie Jaquin
 Candace Johnson
 Jonathan Johnson
 Matt Jones & Candace Stewart
 Marion Joppe
 Daniel Kahisay
 Bob & Kendra Kallonen



Staff at Galaxy Cinemas Guelph volunteer their time to host the Starlight Film Festival, with all proceeds from the event going to United Way Guelph Wellington Dufferin.

David Kavanagh
 Nicholas Keleher
 Sue Keuhl
 Somchay Khansaiyasith
 Issak Kidane
 John & Miranda Kissick
 Christina Kogut
 Peter Krell & Eva Nagy
 Frank & Molly Kriksic
 Richard Kuhn
 Peter & Kelly Lambe
 Karen Landman
 Bryan M. Larkin
 Dave Latreille
 Steve Lawton
 Janet Le Courtois
 Jeff Leask
 Aaron Liersch
 Angela Light
 Geoff Linton
 Randall & Jane Litchfield
 Dawn Little
 John Livernois
 Lewis Lukens
 Debora Lyle
 Ernie MacFadden
 George & Randa MacNaughton
 Elizabeth Madter
 James Mahone
 Mike & Andrea Manera
 Stephen & Christine
 Louis Martel
 Chris Martin
 Jessica Martin
 Ralph Martin
 Jackson & Joan Mathieu
 Jerry Matthews
 John McCormack
 Scott McCormack
 Thomas McCormick
 Ian McDiarmid
 Ian McGinty
 Cameron McKenzie
 Roger McLean
 Mark McLear
 Doug & Robbyn McLellan
 Tracy McLennan

Stephen McNeil
 Philip Meagher
 Paula & Ian Menzies
 Valerie Meyer
 John Miles
 Jenna Mischuk
 Bernadette Mitchell
 Mahshid Moazzen
 Rich & Sandra Moccia
 Lynda Moore
 John Morley
 Paul Morris & Angela Campbell
 Mark Morrison
 Barbara Morrongiello-Gottlieb
 Bahaar Luhar & Shaheer Abha
 Jose Munol
 Beth Murison
 Jacqueline Murray
 Canon Margaret Murray
 Greg Newborough
 Georgia Mason & Jonathan Newman
 Linda Newton
 Brian O'Connor
 Terry O'Connor
 Ivan O'Halloran
 Kerri O'Kane
 Jane & Gary O'Leary
 Richard Olson
 Gerard O'Neill
 Malcolm Ortelli
 John Osborne
 Gord Ough
 Cecelia Paine & James Taylor
 Lui & Nadia Paolini
 Jane Parmley
 Josh Patterson
 Sev Peloso
 Craig Perigo
 Chris Perkins & Paula Rnadall-Perkins
 Brian & Julianne Pettigrew
 Chuck Phillips
 Barbara Powell
 Jean Prichard & Leigh Hutchins
 Istvan Rajcan
 Brenda Rantz
 Brian Reid
 Keith Reid

Lorna Reid
 Joan Reimer
 Karen V. Reimer
 Kevin Reynard
 Dawn Reynolds
 Shawn Rhodes
 Tanya Richardson
 Greg Riff
 Lisa Ritter
 Peter Robinson
 Helen Robson
 Keith Ronald
 Tara Ross
 Brigitte Roth
 Dominic Rouse
 Judy Rowsell
 Shirley Rowsell
 Mark Santin
 Sharon & Walter Schajnoha
 Nancy Schmidt & Harold Chapman
 Laurie Schnarr & Alan Walters
 Richard Schroeder
 Adrian Schwan
 Tara Secor
 Brian Serpa
 Byron Sheldrick
 Patricia Sheridan
 Alex Shore
 Jeannie Shore
 Mike Sinkovitz
 David Skeoch
 John Sleeman
 Aimee Smith & Jason Goodfellow
 Barbara Smith
 Janice Smith
 Mr. Michael Soligo
 Deborah Stacey
 Rodney & Marlene Stork
 Lynette Stradeski
 Nancy Sullivan
 C.J. Swanton
 Barb Swartzentruber
 Tina Swindells
 Daniel Tasker
 Christine & David Taub
 Gerhardt Tausch
 Irene Thompson

Dan & Connie Thornton
 Catherine & George Thurtell
 The Tomlinson Family
 Serge Tremblay
 Donald Trout
 Jasmine Urisk
 Rene Van Acker
 Steve Vanderstam
 Frank Vicira
 Alicia M Vilorio-Petit
 Michael VonMassow
 Philip Ward
 Mark Wassing
 Linda Watt
 Karen Wegner

Robert Wesseling
 Darren & Pam Whipp
 James Wilson
 Lillian Wilson
 Dr. William Winegard
 David Wolyn
 Norm Woodard
 Patricia Wright
 Jeff Young
 Darren Zink
 77 Anonymous

Friends of United Way (\$500-\$999)

Thank you to the 580 Friends who gave at the \$500 to \$999 level.

United Way Everyday Heroes (\$364 to \$499)

Thank you to the 725 Everyday Heroes, giving \$1 a day in support of United Way.

Sincerest apologies for any errors and omissions.

Campaign Sponsors

Every year, caring local businesses sponsor United Way printed materials, events and advertising space, helping keep our costs low. We thank these companies for their contribution to the United Way and to their community!

Material & Event Sponsors

Cargill Canada
 The Co-operators
 Delta Hotel & Conference Centre, Guelph
 Galaxy Cinemas Guelph
 Linamar
 McNeil Consumer Healthcare
 Ontario Trillium Foundation
 Sleeman Breweries
 UNIFOR

Media Sponsors

Guelph Mercury - Community Partnerships Program
 Intrigue Media
 Magic FM/CJOY AM
 Rogers TV
 The Grand 92.9

And a special thanks to the many local businesses that provide United Way with free or reduced costs items throughout the year.



Sponsored Employees

United Way fundraising efforts are enhanced through our Sponsored Employee Program. Sponsored employees are staff generously loaned to us for 14 weeks by their employers to assist with our workplace campaigns.

We extend our thanks to the 2013 Sponsored Employees and their sponsoring companies: Julie Maas, The Co-operators; Monica Spinu, Linamar; Kelli Rice, Ontario Ministry of Agriculture and Food and Ministry of Rural Affairs (OMAF & MRA); and Eric Caprio, University of Guelph.

2013 Financial Overview

Accountable and transparent to our donors

United Way continues to be on sound financial footing, allowing the organization to meet its commitments and carry-out its mission.

At United Way, we strive to be open and accountable regarding how the funds we raised are put to use in the community.

In our audited financial statements for 2013, revenue and expenses are stated in four areas of operation—campaign (including program funding), community services (social planning), building and capital, and deferred giving (United Way’s endowment fund), and then as a combined total. Overall, the audit shows the organization is on sound financial footing, and that the financial practices at United Way are in accordance with Canadian generally accepted accounting principles.

Of United Way’s four areas of operation, campaign represents the largest portion, and as such, additional details related to the campaign/community investment component of the audit are provided in the following discussion and charts.

Audited Statements

Audited statements for United Way Guelph Wellington Dufferin, 2013, are available online at unitedwayguelph.com/about_us/annual_reports. Hard copies of the financial statements can be requested by calling the United Way office.

Financial Summary

Campaign & Community Investment

Program Funding—Of the \$3.49 million in total United Way campaign revenue pledged in 2013, \$2.57 million is going directly to program funding in 2014. This provides funding for 86 programs at 53 local agencies.

Pledge loss, funds held back to account for pledges promised that are not received (for instance, in cases of job loss), stood at 5 percent in 2013.

Fundraising costs account for 19 percent of campaign revenue in 2013, well below industry benchmarks of 26%.

Key Financial Figures, 2013

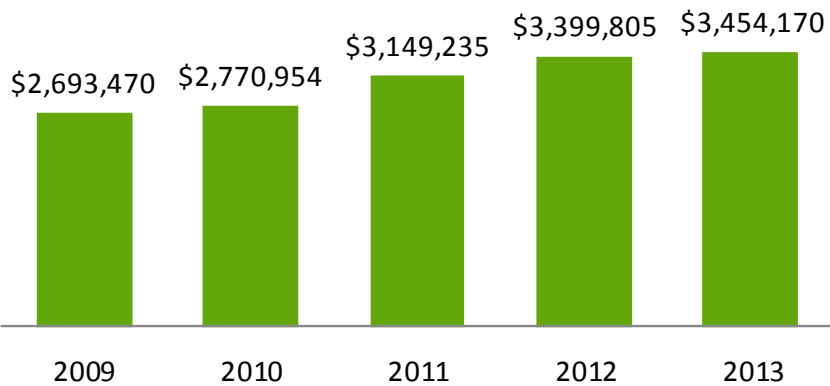
\$3.49 million raised, campaign 2013
28% increase over 5 years

\$2.57 million to program funding in 2014
43% increase over 5 years

In 2013, it cost United Way 19¢ to raise \$1
Fundraising costs have remained under 20% for the past 5 years.

Give. Volunteer. Act.

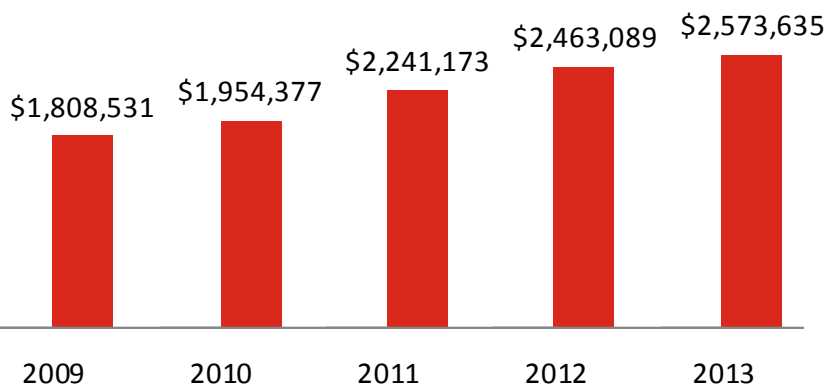
Donations pledged to United Way fundraising campaign, 2009 - 2013



2013 compared to one year ago....

- Fundraising revenue from the annual United Way campaign has increased almost 2%.
- Program allocations have increased 4.5%.

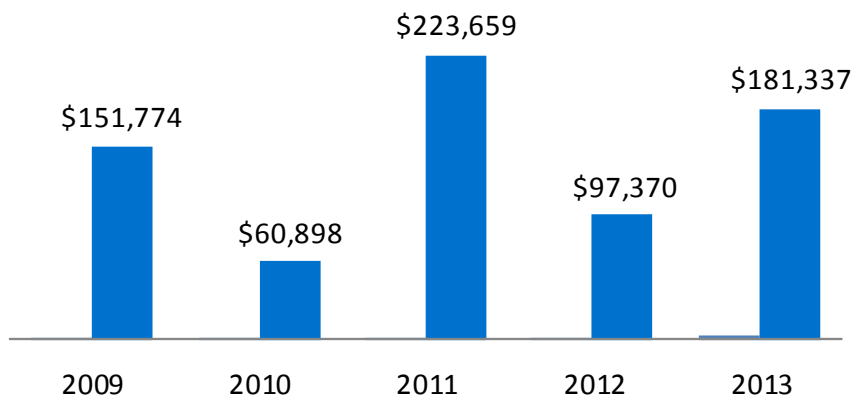
United Way investment in community programs, 2009 - 2013



2013 compared to five years ago....

- Fundraising revenue from the annual United Way campaign has increased 28%.
- Program allocations have increased 42%.
- During a period when campaign revenue has increased by over \$700,000, campaign costs have increased by only \$130,000

United Way Pledge Loss 2009 - 2013



Note: Total campaign revenue comprises pledged donations (of \$3,454,170 in 2013) and additional income from grants, interest, etc. (\$39,377 in 2013).



United Way
Guelph Wellington
Dufferin

Change starts here.

Our Mission.

United Way Guelph Wellington Dufferin strives to meet existing and emerging social needs in order to improve lives and build community.

85 Westmount Rd., Guelph ON N1H 5J2

Tel: 519.821.0571

Fax: 519.821.7847

Email: info@unitedwayguelph.com

Website: unitedwayguelph.com

Facebook: www.facebook.com/unitedwayguelph

Twitter: twitter.com/UWGuelph

Registered Charitable Number:
10745 7053 RR 0001

This report was released May 14, 2014, at United Way Guelph Wellington Dufferin's annual general meeting.

