



United Way
Guelph Wellington
Dufferin

2014 ANNUAL REPORT



Change starts here.



unitedwayguelph.com

Table of Contents

03	President & Executive Director's Message
05	Board of Directors and Committees
07	Community Investment
11	2014 Community Impact
13	Fundraising Campaign
15	United Way Campaign Awards
16	United Way Corporate Honour Roll
17	United Way Leadership Honour Roll
21	Campaign Sponsors
22	2014 Financial Overview

Our Mission.

United Way Guelph Wellington Dufferin strives to meet existing and emerging social needs in order to improve lives and build community.

President & Executive Director's Report

United Way—making change start here.

2014 was a year of continued success and growth, focused on improving lives and building community.



programs at 57 local agencies in the City of Guelph and Wellington and Dufferin counties. We want to take a moment to recognize the contributions of the staff and volunteers of the agencies that receive funding from United Way. Their dedication to their users and our community is an inspiration.

What a year!

In 2014, our community came together to raise a record \$3.64 million in support of United Way. Once again, this is the largest amount we have ever raised and we are thankful to the more than 8,500 donors, both individual and corporate, that made this possible.

We would like to take this opportunity to thank all of our volunteers who donated their time and energy to run workplace campaigns. Our success is due, in large part, to these dedicated volunteers and their generous community spirit!

We also thank our board of directors and committee members, who ensure that not only are dollars raised, but that they are invested where they can do the most in the community.

The success of the 2014 campaign has made it possible for United Way to invest in 95 social service

In 2015, we are looking forward to celebrating our 75th anniversary! In 1940, the local United Way began as the Guelph Community Chest for War & Welfare Services, established to conduct a single, annual campaign for voluntary sector agencies that were conducting individual campaigns. Seventy-five years later, our name may have changed, but our mission remains the same. We are proud of the part United Way has played in shaping the social service framework within our local community, and look forward to continuing to make our community stronger.

With the addition of our new Campaign Chair, Karen Farbridge, we are looking ahead to building new partnerships within our community and new and exciting campaign initiatives planned for 2015 and beyond.

As the largest non-governmental funder of the social and voluntary sector, United Way donors, volunteers and fund recipients work together to improve lives and build community — making change start here!

In closing, we thank all of you for your commitment to United Way. With your support, United Way will continue to fund local programs that move people from poverty to possibility, that create strong communities, and that help kids be all that they can be. Thanks to you, we are making **change start here**.

Khalid M. Khokhar

Khalid Khokhar,
President, Board of Directors

Ken Dardano

Ken Dardano,
Executive Director

Day of Caring



United Way's Day of Caring™ program connects workplaces with charities in need of volunteers for specific projects. In 2014, several companies participated in a Day of Caring, doing such things as painting at Marianne's Place women's shelter, tree planting, and serving breakfast at Onward Willow Better Beginnings Better Futures. Those taking part benefited from team building and giving back to their community.

Board of Directors & Committees

Board of Directors

The board of directors generously donate their time and talents to building and strengthening United Way through their leadership, strategic direction and financial oversight.

President: Khalid Khokhar, Islamic School of Cambridge

Vice President: Judy Sorbara, Retired Principal, Upper Grand District School Board

Treasurer: Jean Prichard, BDO Canada LLP

Past President: Steve Allen, Arcelor Mittal Dofasco Inc.

Kelly Henderson, Associated Youth Services of Peel

Stuart Holloway, Metalumen

Margaret Lemoine, City of Guelph

Rick McCombie, The Co-operators

Terry Peach, GE Canada (retired)

Irene Thompson, University of Guelph

Vanessa Young, Intrigue Media

United Way Guelph Wellington

Dufferin Executive Director: Ken Dardano

Campaign Cabinet

The success of the 2014 United Way fundraising campaign was lead by the tireless efforts of our volunteer campaign cabinet. Chaired by Bryan Larkin, cabinet members became our strongest ambassadors, encouraging their peers and their neighbours to invest in their community by giving to United Way.

Campaign Chair

Bryan Larkin

Business/Finance Co-Chairs

Sandra Dawe, The Co-operators

Kazi Marouf, Guelph Hydro

Education Division Co-Chairs

Brian Capovilla, Wellington

Catholic District School Board

Kim Best, University of Guelph

Richard Moccia, University of Guelph

Labour Division Chair

Enza Commisso, City of Guelph

Leadership Co-Chairs

Irene Thompson, University of Guelph

Mark Kelland, TD Canada Trust

Manufacturing Co-Chairs

Craig George, Linex Manufacturing

Roxanne Rose, Linamar Corporate

Chris Riecker, Cargill Canada

Darren Whipp, Cargill Canada

Public Sector Co-Chairs

Jason Bruder, Canadian Food

Inspection, Agency – Agriculture Canada

Debbie Bentley-Lauzon, Wyndham House



Campaign Cabinet members, and University of Guelph's United Way Campaign Co-Chairs Richard Moccia and Kim Best.



Staff member Carol Bryon and Campaign Cabinet member Irene Thompson helping out at the 2014 Campaign Kick-off BBQ.

Fund Distribution Committee

Volunteers on the fund distribution committee ensure donations to United Way are put to their best use. They review the programs applying for United Way funding, ensuring they are offering services in response to the identified community needs.

Committee Chair: Kelly Henderson, Executive Director, Associated Youth Services of Peel, United Way board of directors

Kate Barlow, Markets & Trade Officer, Agri-Food Canada

Vic Follitt, General Manager, The Grand 92.9

Stuart Holloway, Financial Controller, Metalumen, United Way Board of Directors

Hayley MacKinnon, Program Manager, Centre for International Governance Innovation

Moustapha Oke, Research Analyst, OMAF & MRA

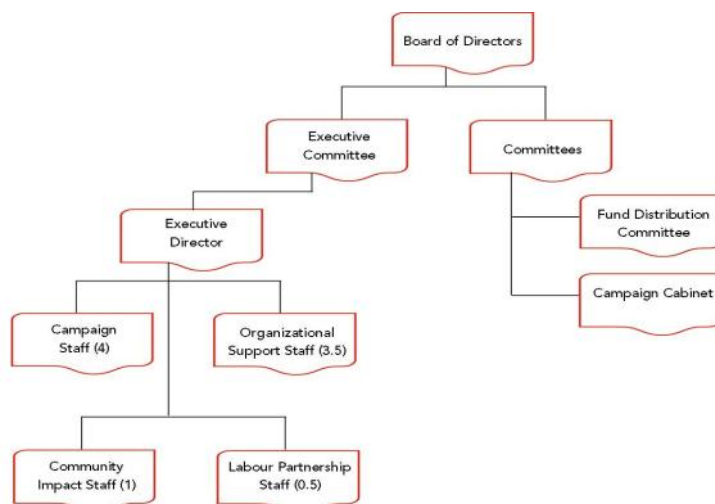
Susan Robinson McPetric, Community Member

Spencer Sandor, Policy Analyst, Ontario Ministry of Agriculture, Food and Rural Affairs

Ruth vanLoon, Social Worker, Langs Community Health Centre

United Way Staff Reps: Ken Dardano, Shakiba Shayani

Organizational Structure United Way Guelph Wellington Dufferin, 2014



Staff

(as of December 31, 2014)

Ken Dardano, Executive Director

Isabella Barretto, Campaign Manager

Carol Byron, Financial Manager

Brenda Carson, Campaign Director

Colleen Murdoch, Communications Director

Terry O'Connor, Labour Coordinator

Emma Rogers, Campaign Manager

Shakiba Shayani, Community Investment Manager

Jillian Tausky, Systems and Database Manager

Jean Thompson, Administrative Assistant

Patricia Townson, Campaign Manager (parental leave)

Staff moving on during 2014:

Grace Correia

Dale Mills



United Way staff members and Sponsored Employees at the 2014 Campaign Kick-off BBQ.

Community Investment

Funded Programs

In 2014, United Way committed to providing \$2.73 million to 95 programs in the City of Guelph and Dufferin and Wellington counties in 2015-16.

Funds allocated in 2014 are distributed to programs April 1, 2015 to March 31, 2016.

Abbeyfield Guelph Fund

- Our Place Youth Supper Program (\$28,000)
- Fresh Start (\$15,000)

Action Read Community Literacy Centre

- Early Start Family Literacy (\$18,000)
- Educational Supports for Disadvantaged Adults (\$45,140)

ARCH: HIV/AIDS Resources & Community Health

- Support Program for People Living with HIV/AIDS (\$25,000)

Alzheimer Society Waterloo Wellington

- Peer Support for Early Stage Alzheimer's Disease (\$10,000)

Autism Ontario—Wellington County Chapter

- Summer Programming (\$14,000)

Big Brothers Big Sisters of Dufferin & District

- Match Program (\$25,000)
- In-School Mentoring (\$9,200)

Big Brothers Big Sisters of Guelph

- Group Program (\$24,722)
- Mentoring Program (\$11,400)
- Match Program (\$69,312)
- School-based Group Programs (\$15,000)

Big Brothers Big Sisters of North Wellington

- Go Girls and Game On (\$3,000)
- In-School Mentoring Program (\$4,000)
- Match Program (\$20,680)

Breaststrokes

- Breaststrokes Dragon Boat Team (\$3,850)

Canadian Hearing Society

- Hearing Care Counselling Program (\$7,200)

- Information Services & Community Development (\$8,600)

Canadian Mental Health Association: Waterloo Wellington Dufferin

- Mental Health Promotion & Education Services (\$28,180)
- Spark of Brilliance (\$27,210)
- Youth Talk (\$24,500)

Canadian National Institute for the Blind (CNIB)

- Children & Youth Services (\$12,875)
- Vision Rehab Services (\$17,997)
- Library Services (\$5,091)
- Volunteer Services (\$10,000)

Canadian Red Cross Society – Guelph/Wellington Branch

- Disaster Services (\$7,500)
- Healthcare Equipment Loan Program (\$12,000)
- Respected (\$8,000)



Members of United Way's funded agencies for 2015-2016.

United Way Focus Areas

United Way invests funds in community programs based on identified community needs. Local volunteers manage the distribution of funds, thoroughly researching & meeting with agencies applying to United Way to learn first-hand how their programs address local issues. This process ensures that your donated dollars go where they are needed most. Funds are allocated to programs in the priority areas outlined below.



Centre Wellington Food Bank

- Healthy Fresh Food (\$10,500)

Chalmers Community Services Centre

- Food Pantry (\$23,220)

Children's Foundation of Guelph and Wellington

- Food & Friends (\$45,000)

Child Witness Centre

- Child Witness Program (\$6,000)

Community, Engagement & Global Citizenship, Student Life

- Project Serve (\$4,500)

Community Resource Centre of North & Centre Wellington

- Outreach and Support Services (\$103,809)

Community Torchlight/Distress Centre Wellington/Dufferin

- Distress Line Listening Service (\$85,000)

Crime Stoppers

- It's Your School, Make The Call (\$6,000)

Dufferin Child and Family Services

- LGBT Youth Group (\$6,600)

Dufferin Parent Support Network

- Group Parent Education (\$16,200)

Dunara Homes

- Wellington Guelph Hoarding Response (\$15,000)

East Wellington Community Services

- Client Services (\$45,727)
- Food Bank (\$22,500)
- Community Outreach (\$35,000)
- Volunteer Development (\$19,500)

Family & Children's Services of Guelph Wellington

- Early Intervention Program (\$50,000)

Family Counselling & Support Services

- Credit and Debt Counselling (\$65,000)
- Professional Counselling (\$101,642)

Give Yourself Credit

- Give Yourself Credit (\$29,120)

Guelph & District Labour Council

- Labour Counselling Program (\$27,310)

Guelph & District Multicultural Festival

- Community Engagement (\$7,500)
- One World Living Together Project (\$7,500)

Guelph Community Health Centre

- Garden Fresh Box (\$15,000)

Guelph & Wellington Task Force for Poverty Elimination

- PTF Program (\$20,000)

Guelph Enabling Garden

- Volunteer Co-ordinator Position (\$13,000)

Guelph Independent Living

- Recreation & Inclusion Program (\$10,735)

Guelph Neighbourhood Support Coalition

- Neighbourhood Wellbeing & Resiliency (\$60,000)

Guelph/Wellington Seniors Association

- GWSA Community Support Services (\$142,000)

Guelph-Wellington Women in Crisis

- Rural Women's Shelter Support Program (\$45,000)
- Sexual Assault Centre (\$27,223)

Headwaters Communities in Action

- Community Wellbeing Education & Engagement (\$19,600)
- Mobilizing Collective Action (\$20,400)

Hospice Wellington

- Bereaved by Suicide (\$5,580)
- Grief & Bereavement (\$48,350)
- Wellness Program (\$9,500)

Immigrant Services Guelph-Wellington

- Mobilized, Engaged, Involved (\$37,930)

John Howard Society of Waterloo-Wellington

- Anti-bullying (Crime Prevention) Workshops (\$6,000)
- Communicating Our Perspectives & Emotions (COPES) (\$7,500)
- Community Aftercare (\$15,008)

Learning Disabilities Association Guelph Wellington

- Capacity Building (\$6,000)

March of Dimes

- Assistive Devices Program (\$16,900)

Michael House Pregnancy Care Centre

- Residential Program (\$50,000)
- Supportive/Transitional Housing Program (\$10,000)

Mood Disorders Support Group of Guelph

- Mood Disorders Support Group (\$8,500)

Onward Willow—Better Beginnings, Better Futures

- Building Our Community One Youth at a Time (\$47,500)

Rainbow Programmes for Children

- Inclusive Summer Day Camp (\$14,000)

St. John Ambulance – Fergus/Elora Branch

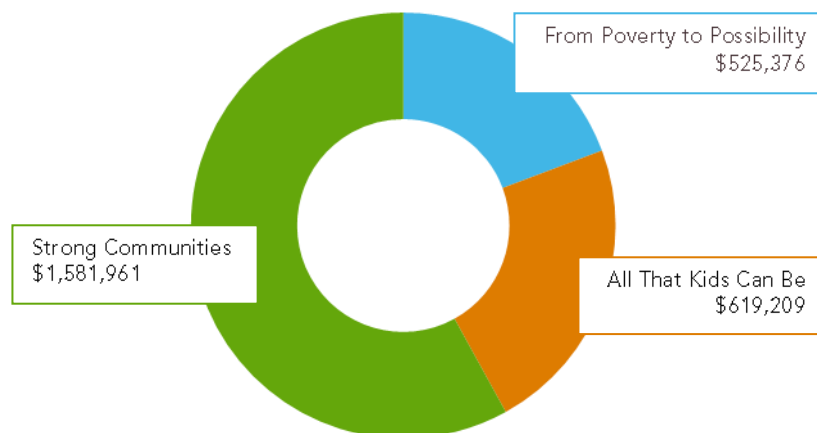
- First Aid & Community Services (\$5,006)

St. John Ambulance – Guelph Branch

- First Aid Program (\$5,000)
- Therapy Dog Program (\$1,000)

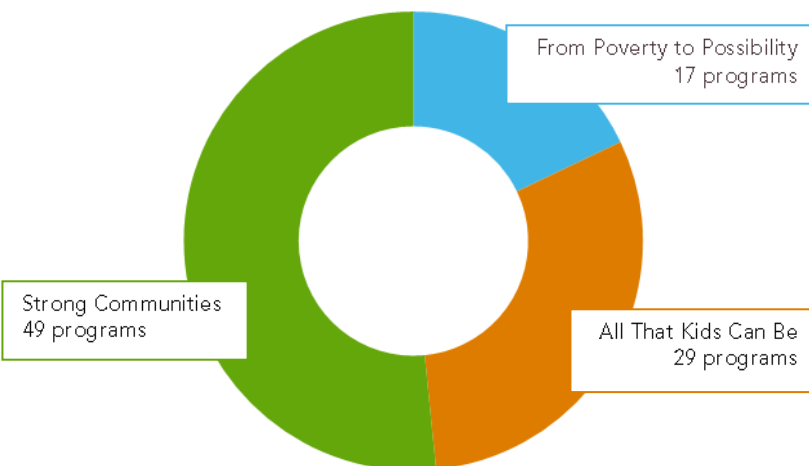
Fund Allocation by Focus Area

2015 – By Dollars



Fund Allocation by Focus Area

2015 – By Program



United Way Guelph Wellington Dufferin

- Community Impact (\$226,360)
- Student Volunteer Recognition Scholarships (\$3,640)

Victorian Order of Nurses

- Client Subsidy Transportation Program (\$10,000)
- Volunteer Visiting (\$16,450)
- Meals on Wheels-Wellington County (\$10,000)
- Meals on Wheels—Guelph (\$12,000)

Volunteer Centre of Guelph/Wellington

- Community Information Guelph (\$89,163)
- Volunteer Services (\$75,000)

Volunteer Dufferin

- Volunteer Dufferin (\$3,000)

Welcome In Drop-In Centre

- Drop-In Centre (\$60,000)
- Last Month's Rent Fund (\$23,985)
- Stepping Stone Emergency Shelter (\$5,865)

Wellington County Learning Centre

- Just for YOUTH Literacy (\$25,000)
- Bridges Out of Poverty: Circles (\$19,500)

Wyndham House Inc.

- Youth Resource Centre (\$101,000)
- Long-term Residential Program (\$99,666)

YMCA/YWCA of Guelph

- Teenage Parents Program (TAPPS) (\$36,100)

Funded Agencies



Chalmers Community Services



Guelph Independent Living



Rainbow Day Camp



East Wellington Community Services



Everyday, programs and services funded by United Way Guelph Wellington Dufferin help our families, our friends, our neighbours. These programs are for everyone in our community, from infants to seniors; from Aberfoyle to Mount Forest to Shelburne. They are programs many of us hope we'll never need to call on, but are thankful for when the need arises. Thanks to our generous donors, United Way Guelph Wellington Dufferin is funding 95 programs at 57 local agencies for 2015-2016.

Community Investment

2014 Community Impact

Monitoring the Overall Health of Our Community

The community impact mission is to improve lives and build community by engaging individuals and mobilizing collective action. Community Impact is about achieving meaningful, long-term improvements to the quality of life in Guelph, Wellington and Dufferin communities, by addressing not just the symptoms of problems, but also getting at the root causes.

Highlight from the activities of the United Way's Community Investment department include:

- Joining the Steering Committee of the Toward Common Ground Project, which aims to strengthen the way the community plans, collaborates, as well as creates and measures meaningful impact.
- Endorsing the Wellington-Dufferin-Guelph Youth Charter of Rights
- Assisting in the mobilization of focus groups to engage in conversations about 1) rural transportation issues in Wellington & Dufferin Counties, and 2) understanding trauma service needs and addressing gaps in Guelph-Wellington-Dufferin
- Joining 20 other organizations as founding partners of the GuelphGives initiative, showcasing the power of generosity during the holiday season.
- Convening or contributing to collaborative initiatives, including:
 - Community Data Program, Wellington-Dufferin-Guelph Consortium
 - Guelph Gives
 - Wellington Guelph Housing Committee
- Guelph & Wellington Task Force for Poverty Elimination
 - Research & Knowledge Mobilization Team
- Wellington-Dufferin-Guelph Coalition for Report Cards on the Well-Being of Children
- Guelph-Wellington Local Immigration Partnership
 - Research Team
- Toward Common Ground

Our Community Investment staff work closely with the local community groups listed above, to address the social service issues identified through the research activities around each table.



Labour Partnership



Since 1988, United Way Centraide Canada and the Canadian Labour Congress have been working together to strengthen communities. Union members and their families are United Way donors and volunteers, as well as users of the programs and services United Way funds. Locally, United Way Guelph Wellington Dufferin is proud of our partnership with the Guelph & District Labour Council. Through workplace campaigns and local events, Labour brings us one step closer to making change start here.



Fundraising Campaign

2014 Campaign Highlights

With United Way thousands of community members come together, contributing their talents and money, and raising funds in support of vital social services.



Over the past 20 years, the annual United Way campaign has raised more than \$48.25 million to support social service and voluntary-sector programs in Guelph, Wellington and Dufferin. With more than 1,100 volunteers taking part in the campaign annually, this is truly a community achievement.

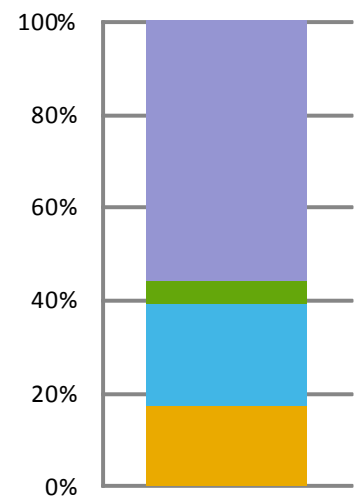
Under the leadership of Campaign Chair Bryan Larkin and the campaign cabinet, the 12 week campaign in the fall of 2014 saw 250 workplaces run campaigns. Volunteers in each workplace collected pledge forms, ran special events and shared the message of the positive changes United Way makes possible in the community. Union locals in workplaces across Guelph, Wellington and Dufferin contributed to the strength of several campaigns. Still others in the community gave through mail or online options.

Campaign by the Numbers

- \$3,645,185—total raised, of which \$3.58 million was through donations
- 8,583 donors
- \$428 average gift
- 474 Leadership Donors, giving over \$1,000 per year
- 706 Everyday Heroes, giving \$1 a day
- \$791,404 in corporate donations

Community Giving 2014

- Employee Giving
- Corporate Giving
- Individuals
- Special Events



United Way Fun!



United Way Workplace Campaigns are an excellent way to engage employees and enhance a corporate image, while demonstrating community spirit. Many of our workplaces choose to run special events or bring in speakers from our funded agencies to speak to employees about the value of their donation. From flipping pancakes and holding raffles to shaving heads and sitting in dunk tanks, we are always amazed at the fun and creative ways our volunteers engage others in their United Way campaigns.

United Way Campaign Awards 2014

Congratulations to the recipients of the 2014 Campaign Awards, and to all the workplaces that contributed to their community through United Way.

Campaign of the Year Award—Private Sector

- Linamar Corporation

Campaign of the Year Award—Public Sector

- City of Guelph

Leadership Giving Award

- OMAFRA

Union-Management Workplace Campaign Award

- City of Guelph

Employee Campaign Coordinator of the Year

- Laurel Davis, OMAFRA

Union Campaign Coordinator of the Year

- Sean Finlay, City of Guelph

Spirit Awards

Education Spirit Awards

- Our Lady of Lourdes Catholic High School
- Department of Hospitality, University of Guelph
- Ontario Veterinary College

Manufacturing Spirit Awards

- Linamar Transportation
- Sleeman Breweries Ltd.
- Cargill Canada

Public Sector Spirit Awards

- OMAFRA
- Canadian Food Inspection Agency
- County of Wellington



Linamar Corporation accepts the 2014 Campaign of the Year Award—Private Sector

Business & Finance Spirit Awards

- The Co-operators
- BMO Bank of Montreal
- TransAlta

Agency Speaker of the Year Award

- Jennifer Harrison, Rainbow Programmes for Children

First Time Campaigns

- Costco—Guelph
- CpK Interior Products
- Dufferin employees

United Way Day of Caring Award

- GE Water & Process Technologies

Outstanding Corporate Campaign

- Sleeman Breweries Ltd.

Outstanding Special Event

- University of Guelph College Idol

Community Partnership Award

- Cutten Fields Charity Golf Tournament

Labour Award of Distinction

- CUPE 1334

Pacesetting Campaigns

BMO Bank of Montreal
 Cargill Canada
 CJOY/Magic FM
 The Co-operators
 Denso Manufacturing Canada Inc.
 Farm Credit Canada
 GE Water & Process Technologies
 Guelph Hydro employees
 Guelph Mercury
 Guelph Twines
 Linamar's Hastech, Linergy, Transportation, LPP, Powercor and Roctel facilities
 McNeil Consumer Healthcare
 RBC Foundation
 Sleeman Breweries Ltd.
 TD Canada Trust
 United Way Guelph Wellington Dufferin employees

Participation Awards

Platinum Award Winners

- BMO Bank of Montreal (multiple branches)
- Union Gas
- United Way Guelph Wellington Dufferin employees
- Volunteer Centre of Guelph/Wellington

Gold Award Winners

- ARCH: HIV/AIDS Resources & Community Health
- East Wellington Community Services
- Family Counselling & Support Services
- RBC Royal Bank (multiple branches)
- RLB LLP
- Service Canada
- TransAlta

Silver Award Winners

- Action Read Community Literacy Centre
- AdFarm
- Bayer Crop Science
- Best Buy/Future Shop—Guelph
- Cargill Canada
- Guelph Hydro
- Guelph Wellington Women In Crisis
- Inbox Marketer Corporation
- Rogers TV Cable 20
- SIHI Pumps Limited
- TD Canada Trust
- The Co-operators
- Wellington County employees

Bronze Award Winners

- Big Brothers Big Sisters Guelph
- EastGen
- Future Shop/Best Buy
- Hydro One
- Ministry of Agriculture, Food & Rural Affairs
- SmithValeriotte Law Firm LLP



OMAFRA's ECC's Laurel Davis accepts the Public Sector Division Spirit Award.

- Syngenta Crop Protection Canada Inc.
- Transgear Manufacturing Inc.
- Triumph Tool

United Way Corporate Honour Roll

These organizations donated \$5,000 or more to United Way in 2012 through corporate, employee, union member, and retiree donations. Thanks to everyone for their generosity!

\$500,000 and above

Linamar Corporation
University of Guelph community

\$200,000 to \$499,999

Cargill Canada
The Co-operators

\$100,000 to \$199,999

Sleeman Breweries Ltd.

\$50,000 to \$99,999

City of Guelph employees

Guelph Hydro employees

LCBO

McNeil Consumer Healthcare

OMAFRA/Provincial Employees

Wellington Catholic District School Board

Wellington County employees

\$25,000 to \$49,999

Agricorp

Blount Canada Ltd.

Costco Wholesale Canada Ltd.

Government of Canada Workplace Charitable Campaign

\$10,000 to \$24,999

Bayer Crop Science

Cascade (Canada) Ltd

Denso Manufacturing Canada Inc.

Guelph General Hospital

Hitachi Construction Truck Manufacturing Ltd.

Homewood Health Centre

OLG Slots at Grand River Raceway

Owens Corning Canada

RBC Royal Bank

RLB LLP

Scotiabank

Syngenta Crop Protection Canada

Tacoma Engineers Inc.

TD Canada Trust

Upper Grand District School Board

\$5,000 to \$9,999

Aecom

BDO Canada LLP

BMO Bank of Montreal

Canadian Mental Health Association
Waterloo Wellington Dufferin

CIBC

CpK Interior Products

EastGen
 Family & Children's Services of Guelph
 and Wellington
 Galaxy Cinemas Guelph (Starlight Film
 Festival event)
 Inbox Marketer Corporation
 Manulife Financial
 Millennium 1 Solutions
 TransAlta
 Triumph Tool Ltd.
 United Way Guelph Wellington Dufferin
 employees
 Wellington Dufferin Guelph Public
 Health



Jeff Nealy (Linamar Transportation), Sue Keuhl (Sleeman Breweries Ltd.) & Vince Campolongo (Wellington Catholic D.S.B.) accept the "Employees Making A Difference Award" for their outstanding contributions to their United Way campaigns.

Leadership Honour Roll

United Way Leadership donors are recognized for annual gifts of over \$1,000. We thank the individuals below for their generosity and their contribution to improving lives and building community.

Champions (\$10,000+)

John & Pamela Rennie
 1 Anonymous

Pathfinders (\$5,000-\$9,999)

Sid Brodovsky & Cary Shafir
 Brenda Coomber & Jamie Ford
 Cynthia MacLeod
 Maureen Mancuso & Kevin Porter
 Mr. Geoff Newton
 Sandra Rechico
 5 Anonymous

Patrons (\$2,500 - \$4,999)

Steve & Marnie Allen
 Katherine Bardswick
 Ian K. Barker
 John Bligh
 Prof. Nancy Bligh
 Doug Bouck

Dr. Donald Bruce
 Christian Giroux & Anna Cox
 Beverley Hale & Lloyd Cummins
 Mr. James Harrington
 Vicki Hodgkinson
 Jim & Sandra Jarrell
 Ric & Betty Jordan
 Janet Laird
 J.I. MacInnes
 Rick & Joanne McCombie
 Stuart McCook
 Patricia J. McCraw
 Mr. Gregg Mitchell
 Lucia Mitukiewicz
 Georgia Mason & Jonathan Newman

Bol Niwar
 Ms. Helen Oliver
 Debra Sikora
 Al Sullivan
 Dr. Ann Wilson
 11 Anonymous

Builders (\$1,500 - \$2,499)

Mr. Frank Bomben
 Mr. Mike Brown
 Mr. Robert Brown
 Mr. Jason Bruder
 Alasdair & Michelle Campbell
 Dr. Anthony Clarke



Recipients of the 2014 Education Division Spirit Award



Members of the Guelph Police Service's TRU assisting with the 2014 Campaign Kick-Off!

Mr. Edward Clayson
 Ken Dardano
 Terry & Dorothy Daynard
 Mr. Craig Ferneyhough
 Denise & Martin Fielding
 John D. Goddard
 Mr. Philip Gosling
 Ms. Gayleen Gray
 Marsha Groves
 George & Jantje Harauz
 Ms. Martha Harley
 Rosemary Hayhurst-France
 Mark & Denise Kelland
 Allan & Lena King
 Jim & Kelly Kirkland
 Mr. Ross Knechtel
 Bill & Colleen Koornstra
 Mr. Eddie Kowai
 Frank Lowery
 Carl & Jennifer Mackie
 Jerry Matthews
 Grant & Laura Maxie
 John & Bonnie Melichercik
 Rich & Sandra Moccia
 Mrs. Bahaar Luhar & Mr. Shaheer Abha
 The Kitchener and Waterloo Community
 Foundation/ Ken Murray Fund
 Jane & Gary O'Leary
 Gard Otis & Lisbeth Sider
 Ann Pappert & Al Bogusky
 Kathy Phillips
 Mrs. Christina Reddin

Mr. James Reddin
 Ms. Lorna Reid
 Janice Reiner
 Ms. Gloria Reynen
 Grant Robinson
 Brigitte Roth
 Ross Rowat
 D. Stark & H. Dobson
 R.M.W. Stevenson
 Martin & Sandy Stocker
 Ms. Lynette Stradeski
 Irene Thompson
 Mr. Janice Tigert-Walters
 Mr. Steeve Veilleux
 Mr. Frank Vicira
 Jon Warland
 Bruce & Karen West
 Glenn & Marilyn White
 Chris & Dorothea Whitfield
 Mr. Daniel Woods
13 Anonymous donors

Leaders (\$1,000 - \$1,499)

Mr. Ghirmay Abarg
 Dave Aberle
 Tammy Adkin
 Rodger & Beth Vokey
 Drohan Amos

Ms Monica Anthony
 Don & Debbie Armstrong
 Shawn Armstrong
 Lynda M. Ashbourne
 Ms. Sandra Auld
 Mr. Stephen Bard
 Ms. Tracy Barker
 Bill & Jo Barr
 Mr. Brian Beckenhauer
 Ms. Robin Begin
 Carmel Bellamy
 Brenda & Michael Ben
 Mr. Tomasz Bieniarz
 Mr. Scott Bleach
 Gordon Boughner
 Mr. Dave Brancati
 Jodi Brendsme
 Frank O. Brewster
 Mr. Dave Brown
 Kathleen Brown
 Susan Brown
 Selena Buck
 Mr. Janusz Buszkowski
 Charles Bram Cadsby
 Mr. Wayne Caldwell
 Ken Cameron
 Doug Campbell
 Mr. Andrew Carlyle
 Mr. Christopher Carpino
 Catherine Carstairs
 Mr. Phil Chapman
 Chris Chase
 Mr. Joe Chaves
 Mr. Edwin Chestnut
 Kurt Christie
 Mr. Barry Chuddy
 Mr. Giuseppe Cincinnato
 Ms. Colleen Clack
 Jason Clark
 Ms. Jadlyn Cockburn
 Mac Cole
 Ms. Lorraine Collingwood
 Ms. Enza Commisso
 Tanis Comrie
 Dr. Peter Conlon
 Mr. John Connell
 Annie Cote-Kennedy
 Mr. Ian Cowbrough
 Mr. Tito Crespin
 Barry Cullen
 Harry & Lynda Cummings

Charles Cunningham & Anne Stuart
 Ms. Peggy Curry
 Kerry Daly
 Roy Danzmann
 Ms. Sandra Dawe
 Steven De Brabandere
 Mr. Danny DeFidelibus
 Bryan Dennis
 Mr. Jeff DeRuyter
 Steve & Krista Devine
 Trevor & Lucille Dickinson
 Kyle Dietrich
 Mr. Hoan Do
 Don Drone
 Mr. Ted Duchesne
 Mr. Todd Duffield
 Mr. Ernest Duffy
 Ms. Jill Dunk
 Mr. Harry Dunning
 Doug Eberlee
 Michael & Dawn Emes
 Ms. Mary Evans
 Elizabeth Ewan
 Karen Farbridge
 Mr. Andy Ferguson
 Moira Ferguson
 Martin & Denise Fielding
 Mr. Alan Filewod
 Ms. Charlene Fish
 Mr. Danny Fish

Mr. Robert Fisher
 Terry Fisher
 John Fitzgibbon
 Ms. Mindy Foote
 Mr. Rick Ford
 David Fowler
 Mary & Keith Fowler
 Ms. Deborah France
 Mr. Rob Furlong
 Genevieve Gauthier
 Matthew & Beth Gibney
 Mr. J F Gingras
 Stephen Gismond
 Mr. Darryl Goodwin
 Ms. Donna Graham
 Terry & Pam Graham
 Donald Grant
 Dr. & Mrs. Kenneth Gregory
 Mr. Peter Guth
 Zeeshan Haider
 Ms. Sandra Harding
 Stacey Hare
 Mr. Trevor Hart
 Louise and Ian Hayes
 Liz & Murray Hazlett
 Mr. Mike Heidenreich
 Ms. Ella Henderson
 Mr. Gerry Hewitt
 Ms. Joanne Hewson

Dr. Sally Hickson
 Mr. Ellis Hiscock
 Ms. Kathryn Hofer
 Mr. Stuart Holloway
 Al Horsman
 Anastasia & Ruud de Reijke
 Sally Humphries
 Carol Hunter
 David Hurlburt
 Mrs. Florence Hutton
 Kathleen Hyland
 Ms. Kim Iezzi
 Mr. Ward Illsley & Ms. Tina Swindells
 Dr. Kris Inwood
 Rick & Bonnie Irving
 Pamela Jacobs
 Tracey & Edward Jandrisits
 Hollie Jaquin
 Ms. Candace Johnson
 Mr. Peter J Johnson
 Mr. Robert Johnston
 Mr. John Jones
 Ms. Marion Joppe
 David Kavanagh
 Mr. Nicholas Keleher
 Ms. Sue Keuhl
 Issak Kidane
 John & Miranda Kissick
 Peter Krell & Eva Nagy
 Mr. Walter Kroezen
 Richard Kuhn
 Peter & Kelly Lambe
 Ms. Karen Landman
 Ms. Irene Lauzon
 Steve Lawton
 Ms. Janet Le Courtois
 Mr. Jeff Leask
 Mr. Geoff Linton
 Randall & Jane Litchfield
 Mr. John Livernois
 Mr. Lewis Lukens
 Mrs. Debora Lyle
 Mr. Ryan MacInnis
 George & Randa MacNaughton
 Ms. Elizabeth Madter
 James Mahone
 Mr. Richard Manderville
 Mr. Nourain Margan
 Mr. Louis Martel
 Chris Martin
 Ms. Jessica Martin



Staff at Galaxy Cinemas Guelph volunteer their time to host the Starlight Film Festival, with all proceeds from the event going to United Way Guelph Wellington Dufferin.

Mr. Bret Mason
 Jackson & Joan Mathieu
 Mr. Scott McCormack
 Mr. Ian McDiarmid
 Ms. Tammy McDougall
 Mr. Cameron McKenzie
 Mark McLear
 Doug & Robbyn McLellan
 Ms. Tracy McLennan
 Philip Meagher
 Baozhong Meng & Sunny Li
 Paula & Ian Menzies
 Valerie Meyer
 John Miles
 Bernadette Mitchell
 Paul & Kate Mlodzik
 Mr. Aster Mohammed
 Lynda Moore
 Paul Morris & Angela Campbell
 Mark Morrison
 Dr. Barbara Morrongiello-Gottlieb
 Ms. Julianna Murphy
 Jacqueline Murray
 Mr. Philip Natarelli
 Mr. Greg Newborough
 Nandor Novak
 Mr. Andrew Nowakowski
 Terry O'Connor
 Kerri O'Kane
 Mr. Richard Olson
 Malcolm & Carol Ortelli
 Ms. Marlene Orticello
 John Osborne
 Mr. Gord Ough
 Cecelia Paine & James Taylor
 Lui & Nadia Paolini
 Frank Papp
 Ms. Jane Parmley
 Josh Patterson
 Ella and Peter Pauls
 Chris Perkins & Paula Randall-Perkins
 Mr. Marc Perry
 Brian & Julianne Pettigrew
 Mr. Marc Piché
 Jacqueline Poisson
 Ms. Wendy Pollock
 Barbara Powell
 Jean Prichard & Leigh Hutchins
 Istvan Rajcan
 Brian Reid
 Mr. Keith Reid

Karen V. Reimer
 Mr. Shawn Rhodes
 Mrs. Patty Ridgeway
 Mr. Greg Riff
 Ms. Lisa Ritter
 Mr. Stephen Robinson
 Helen Robson
 Keith Ronald
 Tara Ross
 Mr. Dominic Rouse
 Mrs. Shirley Rowsell
 Mr. Mike Sabourin
 Robin Sage
 Ms. Ivana Sajovic
 Mark Santin
 Ms. Rosanna Sartori
 Laurie Schnarr & Alan Walters
 Mr. Adrian Schwan
 Mr. Damian Scott
 Nina & Kelly Scrivens
 Ms. Tara Secor
 Brian Serpa
 Mr. Rob Sharer
 Mr. Byron Sheldrick
 Jeannie & Blaine Shore
 Murray & Jessica Short
 Mike Sinkovitz
 Mr. John Sleeman
 Mr. Andrew Smith
 Mr. Brandon Smith
 Hugh A. Smith
 Janice Smith
 Deborah Stacey
 Elizabeth Arnold Stone
 Rodney & Marlene Stork
 Nancy Sullivan
 C.J. Swanton
 Ramon Jacob & Clive Thomson
 Dan & Connie Thornton
 Catherine & George Thurtell
 Mr. David Tolton
 The Tomlinson Family
 Ms. Flavia Tranguilli-Nardini
 Mr. Donald Trout
 Ms. Patricia Turner
 Ms. Jasmine Urisk
 Mr. Rene Van Acker
 Mr. Adochitei Vasile
 Mike Van Massow & Sheryl Howe
 Philip Ward
 Ms. Linda Watt

Brandon Wettlaufer
 Darren & Pam Whipp
 Harold & Brenda Whiteside
 Jane Wielhorski & Chris Corosky
 Lillian Wilson
 Lorena Wilson
 William Wilson
 Hon. W.C. Winegard P.C., O.C.
 Anthony Winson
 Patricia Wright
 Mr. Jeff Young
 Ms. Maryam Zahedi
 75 Anonymous Donors

Friends of United Way (\$500-\$999)

Thank you to the 545 Friends who gave at the \$500 to \$999 level.

United Way Everyday Heroes (\$364 to \$499)

Thank you to the 706 Everyday Heroes, giving \$1 a day in support of United Way.

Sincerest apologies for any errors and omissions.

Campaign Sponsors

Every year, caring local businesses sponsor United Way printed materials, events and advertising space, helping keep our costs low. We thank these companies for their contribution to the United Way and to their community!

Material & Event Sponsors

Cargill Canada
The Co-operators
Delta Hotel & Conference Centre,
Guelph
Galaxy Cinemas Guelph
Guelph Police Service
Linamar
McNeil Consumer Healthcare
Ontario Trillium Foundation
Sleeman Breweries

Media Sponsors

Guelph Mercury - Community
Partnerships Program
Intrigue Media
Magic FM/CJOY AM
Rogers TV
The Grand 92.9

And a special thanks to the many local businesses that provide United Way with free or reduced cost items throughout the year.



Sponsored Employees

United Way fundraising efforts are enhanced through our Sponsored Employee Program. Sponsored employees are staff generously loaned to us for 14 weeks by their employers to assist with our workplace campaigns.

We extend our thanks to the 2014 Sponsored Employees and their sponsoring companies:

Ally Perdomo-Herrera, The Co-operators; Sara Mammoliti, Linamar; Anna Scott, Ontario Ministry of Agriculture and Food and Ministry of Rural Affairs (OMAF & MRA); and Hayley Whitehouse, University of Guelph.

2014 Financial Overview

Accountable and transparent to our donors

United Way continues to be on sound financial footing, allowing the organization to meet its commitments and carry-out its mission.

At United Way, we strive to be open and accountable regarding how the funds we raised are put to use in the community.

In our audited financial statements for 2014, revenue and expenses are stated in four areas of operation—campaign (including program funding), community services (community investment), building and capital, and deferred giving (United Way's endowment fund), and then as a combined total. Overall, the audit shows the organization is on sound financial footing, and that the financial practices at United Way are in accordance with Canadian generally accepted accounting principles.

Of United Way's four areas of operation, campaign represents the largest portion, and as such, additional details related to the campaign/community investment component of the audit are provided in the following discussion and charts.

Audited Statements

Audited statements for United Way Guelph Wellington Dufferin, 2014, are available online at unitedwayguelph.com/about_us/annual_reports. Hard copies of the financial statements can be requested by calling the United Way office.

Financial Summary

Campaign & Community Investment

Program Funding—Of the \$3.64 million in total United Way campaign revenue pledged in 2014, \$2.73 million is going directly to program funding in 2015. This provides funding for 95 programs at 57 local agencies.

Pledge loss, funds held back to account for pledges promised that are not received (for instance, in cases of job loss), stood at 7 percent in 2014.

Fundraising costs account for 18 percent of campaign revenue in 2014, well below industry benchmarks of 26%.

Key Financial Figures, 2014

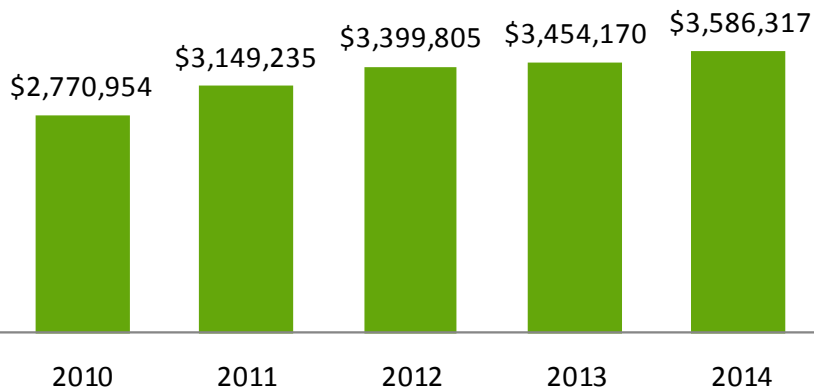
\$3.64 million raised, campaign 2014
30% increase over 5 years

\$2.73 million to program funding in 2015
40% increase over 5 years

In 2014, it cost United Way 18¢ to raise \$1
Fundraising costs have remained under 20% for the past 5 years.

Give. Volunteer. Act.

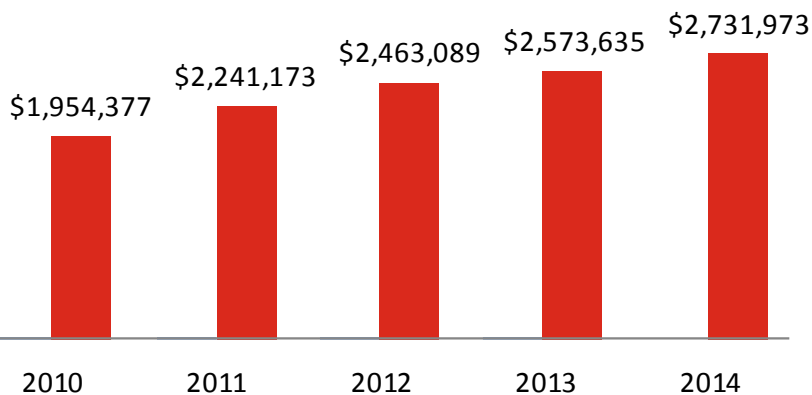
Donations pledged to United Way fundraising campaign, 2010 - 2014



2014 compared to one year ago....

- Fundraising revenue from the annual United Way campaign has increased more than 4%.
- Program allocations have increased 6%.

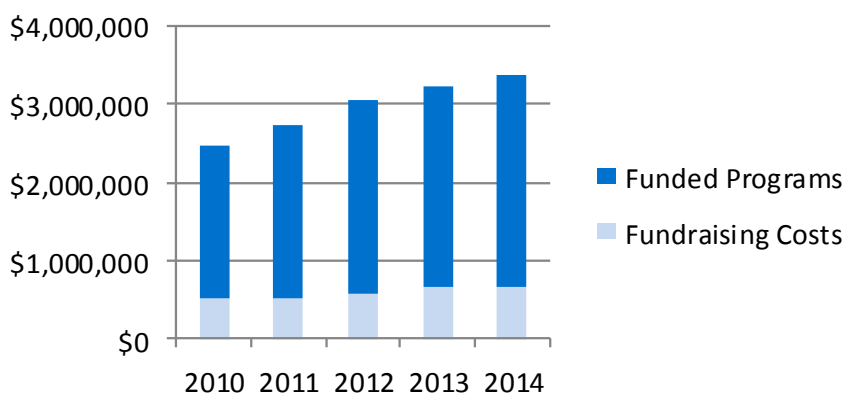
United Way investment in community programs, 2010 - 2014



2014 compared to five years ago....

- Fundraising revenue from the annual United Way campaign has increased 30%.
- Program allocations have increased almost 40%.
- During a period when campaign revenue has increased by over \$850,000, campaign costs have increased by only \$146,000

Comparison of Funded Programs & Fundraising Costs, 2010 - 2014



Note: Total campaign revenue comprises pledged donations (of \$3,586,317 in 2014) and additional income from grants, interest, etc. (\$58,868 in 2014).



United Way
Guelph Wellington
Dufferin

Change starts here.

Our Mission.

United Way Guelph Wellington Dufferin strives to meet existing and emerging social needs in order to improve lives and build community.

85 Westmount Rd., Guelph ON N1H 5J2

Tel: 519.821.0571

Fax: 519.821.7847

Email: info@unitedwayguelph.com

Website: unitedwayguelph.com

Facebook: www.facebook.com/unitedwayguelph

Twitter: twitter.com/UWGuelph

Registered Charitable Number:
10745 7053 RR 0001

This report was released May 13, 2015, at United Way Guelph Wellington Dufferin's annual general meeting.